

# ACEC

AMERICAN COUNCIL OF ENGINEERING COMPANIES  
of Kansas

## ACEC of Kansas Member Firms

Affinis Corp.  
Allgeier Martin & Associates, Inc.  
Allied Environmental Consultants, Inc.  
AMEC Earth & Environment  
Bartlett & West Engineers, Inc.  
Baughman Company, P.A.  
BG Consultants, Inc.  
BHC Rhodes  
Black & Veatch  
BRB Contractors, Inc.  
Burns & McDonnell Engineers  
BWR  
Camp Dresser & McKee, Inc.  
Campbell, Barber, Lambeth & Associates, P.A.  
CAS Construction, Inc.  
Central Kansas Engineering Consultants, LLC  
Certified Engineering Design  
Cohorst Engineering & Surveying, Inc.  
Cook, Flatt & Strobel Engineers, PA  
Cornerstone Engineering Company  
Crafton, Tull, Sparks & Associates, Inc.  
CTE  
Delich, Roth & Goodwillie, P.A.  
DLR Group  
DMJM Aviation  
Engineering Resources  
Evans, Bierly, Hutchison & Associates, P.A.  
Garver Engineers, LLC  
George Butler Associates, Inc.  
Geotechnology, Inc.  
Goedecke Engineering  
Haley & Aldrich  
Haris Engineering, Inc.  
Harrington & Cortelyou, Inc.  
HDR Engineering, Inc.  
HNTB Corporation  
HWS Consulting Group, Inc.  
K.E. Miller Engineering, P.A.  
Kansas Aggregate Producers' Association-Kansas  
Ready Mixed Concrete Association  
Kaw Valley Engineering, Inc.  
Kirkham, Michael & Associates, Inc.  
KLA Environmental Services, Inc.  
Kleinfelder  
Kramer Engineering, P.A.  
Krudwig & Associates, Inc.  
Landplan Engineering, P.A.  
Latimer, Sommers & Associates, P.A.  
Level-4 Engineering, LLC  
MACTEC Engineering & Consulting, Inc.  
McAfee, Henderson & Strick, Inc.  
Mixon/Hill, Inc.  
MKEC Engineering Consultants, Inc.  
Morrow Engineering, Inc.  
Olsson Associates  
Orazem & Scalora Engineering, P.A.  
Palmerton & Parrish, Inc.  
Parsons Brinckerhoff Quade & Douglas, Inc.  
Payne & Brockway, P.A.  
PEC PA  
Poe & Associates, Inc.  
Ponzer-Youngquist, P.A.  
Poole Fire Protection, Inc.  
Reiss & Goodness Engineers  
RTE Technologies, Inc.  
Ruggles & Bohm, P.A.  
Schwab-Eaton, P.A.  
Shafer, Kline & Warren, Inc.  
Systems Management Consultants, Inc.  
Terracon, Inc.  
TranSystems Corporation  
UHL Engineering, Inc.  
URS Corporation, Inc.  
Walter P. Moore and Associates, Inc.  
Wilbur Smith Associates  
Wilson & Company

# Consulting Kansas

Spring 2007

## ACEC KANSAS PUBLIC IMPROVEMENT AWARDS

Applications for City and County Public Improvement Awards (PIA) will be mailed early summer. It's not too early to begin thinking about what public improvement projects you want to enter.

ACEC of Kansas presents Public Improvement Awards every year in several population categories for both Kansas cities and counties. Created in 1962, these awards do not recognize engineering projects for their engineering excellence. Judges do, however, rate the entries based on their benefit to the citizens of the community.

PIAs offer both cities and counties an excellent opportunity to gain well-

deserved recognition for their projects. City entries that win PIAs receive engraved plaques at the awards luncheon during the Annual Meeting of the Kansas Association of City/County Management, while winning county entries are awarded plaques at the Kansas Association of Counties Annual Meeting Banquet. In addition, winning entries also receive public relations benefits by entering this program.

The deadline for 2007 City PIA entries will be September 1<sup>st</sup> and County PIA entries will be October 1<sup>st</sup>.

For additional information, please visit [www.acecks.org](http://www.acecks.org) or call 785.357.1824.

## COMSTOCK NAMED QBS FACILITATOR FOR ACEC KANSAS/AIA KANSAS

ACEC Kansas, in partnership with AIA Kansas, is delighted to announce that David Comstock has accepted a position as Qualifications Based Selection (QBS) Facilitator for the two organizations.

The QBS Facilitator acts as our representative to promote QBS to owners, mostly in the public sector. As QBS Facilitator, Mr. Comstock will attend various owner conferences as an exhibitor, make contacts with individual public owners to encourage them to change to a QBS process, and recognize those owners that already use QBS on behalf of ACEC and AIA.

Comstock is a natural fit for this position. He has been co-chair of the ACEC/KDOT partnering committee for many years and has worked closely with many ACEC Kansas members. He provides a powerful

testimonial with his support of QBS because he has been a public sector engineer his entire career, responsible for maximizing the value of taxpayer dollars. This puts Comstock in the same position as most of those he will be interacting with to promote QBS.

Comstock retired March 23 as Director of the Division of Engineering and Design with KDOT after serving nearly 40 years with the organization. He has a BS in civil engineering from the University of Missouri at Rolla and an MS in civil engineering from the University of Missouri at Columbia. He is a licensed professional engineer in both Kansas and Missouri. He has been active in AASHTO, ASCE, and KSPE, where he is a Past President.

ACEC is excited to have David Comstock as our QBS Facilitator!

## ACEC of Kansas Firm News

**BHC RHODES**

Skip Johnson, P.E., was elected as the fifth member of the BHC Rhodes Board of Directors. Mr. Johnson joined the company in 2003 to build the Development segment of business, and was named Vice President of Development Services in 2006. As a member of the Board, Johnson will influence the financial operation and policies of the company.

Mr. Johnson's nearly thirty years of experience with contract administration, public involvement and site design along with his dynamic leadership skills, contributed to the company's fast growing Development Services segment, which over the past four years now claims 39% of the company's revenues. High profile projects led by Johnson include the Legends of Sparks Entertainment District in Sparks, NV; One Nineteen Retail Development, Leawood, KS; Parks & Recreation Facility, Oak Grove, MO; Vince & Associates Office Park, Overland Park, KS and Stonebrook Farms Development, Olathe, KS.

**COOK, FLATT & STROBEL ENGINEERS, P.A.**

Cook, Flatt & Strobel Engineers, P.A. announces expanding opportunities for its engineers by creating additional shareholder opportunities.

Lance Scott has been promoted to Associate. He joined the firm in 1996. He is the Kansas City Office Manager and Director for water, wastewater and development projects in the metro area. He is a Professional Engineer, with licenses in Kansas, Missouri, and California.

Charlie Le Page has been promoted to Associate. He serves as Director of Transportation for the Kansas City office. He is a Professional Engineer, licensed in Missouri and Kansas.

Saban Yanez has been promoted to Principal. He joined the firm in 2004. He is the director of the firm's Traffic and ITS group and continues to support the firm's marketing and sales efforts in Missouri and the KC Metro area. He is a Professional Engineer, licensed in Missouri.

**DLR GROUP**

DLR Group proudly announces the following staff have been promoted to Principal in the Firm:

Rod Oathout, PE: As a mechanical engineer, Rod brings 16 years of experience to DLR Group projects and leads the mechanical engineering team in the Overland Park office. Rod is a LEED Accredited Professional who specializes in sustainable design for energy conservation and indoor environment quality and has served as a technical resource for DLR Group on a national level. He is responsible for leading the mechanical system design for all DLR Group Overland Park projects and is proficient in new mechanical systems and in depth analysis of older systems.

Don Barnum, AIA: Don brings 20 years of architecture experience to DLR Group projects. During his career, he has worked on top-notch sports facilities across the nation and served clients in major league baseball, collegiate sports and minor league baseball. In addition, Barnum has helped plan countless community sports and entertainment venues that serve as focal points within the community they serve. As a project leader, he is ultimately responsible for client satisfaction and makes sure projects are delivered on time and within budget.

**LATIMER, SOMMERS & ASSOCIATES, P.A.**

Latimer, Sommers & Associates, P.A., is pleased to announce David B. Everhart, P.E. has been elected as Partner of the Firm. Mr. Everhart is a 2001 graduate of the University of Kansas and has

been with LSA for 6 years. He is responsible for mechanical and electrical project design and project management. He also performs construction observation and construction contract administration during the installation of the systems that he designs.

#### **PROFESSIONAL ENGINEERING CONSULTANTS, P.A.**

Professional Engineering Consultants, P.A. has promoted Bruce W. Allman, P.E., R. Dan Biby, P.E., Michael D. Clifford, L.S., Dennis R. Cook, P.E. and Penelope M. Jost, P.E. from Associate to Senior Associate.

#### **SHAFER, KLINE & WARREN, INC. (SKW)**

The engineering firm of Shafer, Kline & Warren, Inc. (SKW) is pleased to announce Mark Anderson, Mike Duffy, Tim (TJ) Johannes and Gary Strack have recently been appointed to the position of Associate.

Mark Anderson serves as the manager of the Pipeline Services Department based out of the Kansas City office. He joined SKW in 2003 with over 20 years of pipeline industry experience and primarily focuses on assisting gas companies in gaining

compliance with new pipeline integrity management regulations.

Mike Duffy is manager of the Planning Department in the North Kansas City office. He joined SKW in 1995 and holds over 15 years of planning experience. Mike specializes in the development of comprehensive plans, zoning ordinances, subdivision regulations, and a variety of studies to serve public clients.

Tim (TJ) Johannes oversees the Land Surveying Department of the Kansas City office. TJ joined SKW in 1983 and holds over 30 years of land surveying experience. As a licensed surveyor TJ is considered an industry expert, having experience in nearly all types of surveys including boundary and monumentation, photogrammetric control, construction staking, GPS and high definition surveying.

Gary Strack is department manager of the Structural Group in the Overland Park office and has been with SKW since 1990, holding over 25 years of structural engineering experience. Gary is experienced in bridge rehabilitation and replacement and structural design for buildings, retaining walls and other frame structures.

### **ACEC AND KCA TEACH CLASS AT KU MASTERS IN PUBLIC ADMINISTRATION PROGRAM**

For the second consecutive year, ACEC Kansas and the Kansas Contractors Association (KCA) were invited to teach a class to the KU Masters in Public Administration program. Topics covered included project delivery systems, qualifications based selection, project management, and a series of best practice papers that have been produced by the ACEC/KCA partnering committee over the last several years.

This is a great opportunity to get future public leaders to familiarize themselves with these issues and understand the perspective of the engineer and contractor. It has been a great success both years, and we have already been invited back to teach the class again next spring!



AMERICAN COUNCIL OF ENGINEERING COMPANIES  
of Kansas

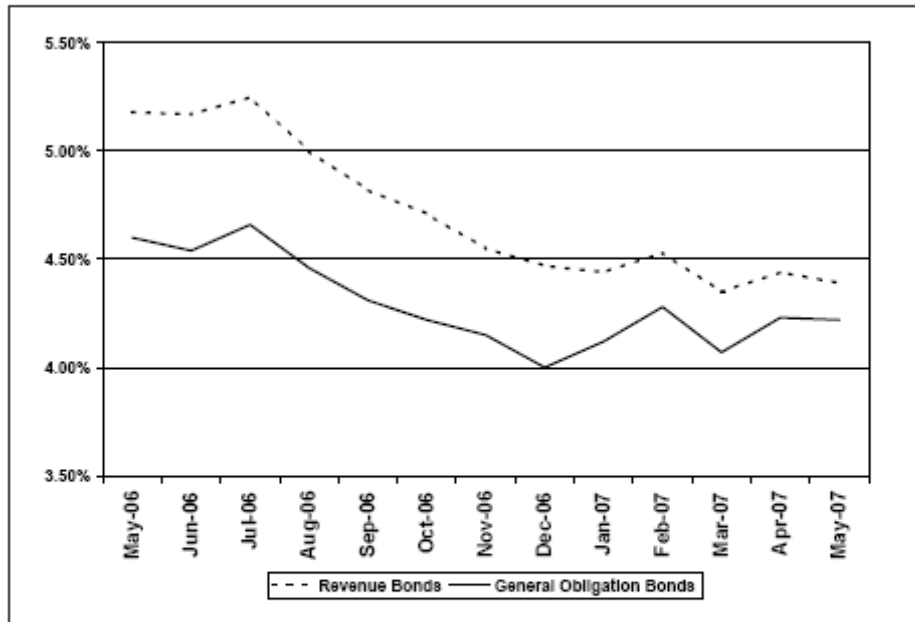
825 S. Kansas Avenue  
Suite 500  
Topeka, Kansas 66612  
Phone: 785/357-1824  
Fax: 785/233-2206  
sheidner@acecks.org  
www.acecks.org

PRSRRT STD  
US POSTAGE  
PAID  
PERMIT #  
Topeka, Kansas

Visit us on the web at:  
www.acecks.org

*Consulting Kansas* is published quarterly for ACEC of Kansas by Gaches, Braden, Barbee & Associates  
Scott Heidner, ACEC of Kansas Executive Director ♦ Phone 785/357-1824 ♦ Email: sheidner@acecks.org

## 12-Month Tax-Exempt Interest Rate Trends



The rates shown are weekly national averages of long-term, tax-exempt rates, adjusted to reflect the Kansas market. They represent selected trends of general obligation bonds and revenue bonds since May 2006. General obligation bonds and revenue bonds issued by Kansas municipalities, when properly structured and secured, can typically be sold at interest rates slightly lower than the national average.

This information was provided by George K. Baum & Company, Investment Bankers, Kansas City. For more information, contact the Public Finance Department of George K. Baum & Company at (800) 821-7195.