

ACEC

AMERICAN COUNCIL OF ENGINEERING COMPANIES
of Kansas

ACEC of Kansas Member Firms

Affinis Corp.
Allgeier Martin & Associates, Inc.
Allied Environmental Consultants, Inc.
AMEC Earth & Environment
Bartlett & West, Inc.
Baughman Company, P.A.
BG Consultants, Inc.
BHC Rhodes
Black & Veatch
BRB Contractors, Inc.
Burns & McDonnell Engineers
BWR
Camp Dresser & McKee, Inc.
CAS Construction, Inc.
Central Kansas Engineering Consultants, LLC
Certified Engineering Design
Cohorst Engineering & Surveying, Inc.
Cook, Flatt & Strobel Engineers, PA
Cornerstone Engineering Company
Crafter, Tull, Sparks & Associates, Inc.
CTE
Delich, Roth & Goodwillie, P.A.
DLR Group
DMJM Aviation
Engineering Resources
Evans, Bierly, Hutchison & Associates, P.A.
Garver Engineers, LLC
George Butler Associates, Inc.
Geotechnology, Inc.
Goedecke Engineering
Haley & Aldrich
Harris Engineering, Inc.
Harrington & Cortelyou, Inc.
HDR Engineering, Inc.
HNTB Corporation
HWS Consulting Group, Inc.
K.E. Miller Engineering, P.A.
Kansas Aggregate Producers' Association-Kansas
Ready Mixed Concrete Association
Kaw Valley Engineering, Inc.
Kirkham, Michael & Associates, Inc.
KLA Environmental Services, Inc.
Kleinfelder
Kramer Engineering, P.A.
Krudwig & Associates, Inc.
Landplan Engineering, P.A.
Latimer, Sommers & Associates, P.A.
Level-4 Engineering, LLC
MACTEC Engineering & Consulting, Inc.
Mixon/Hill, Inc.
MKEC Engineering Consultants, Inc.
Morrow Engineering, Inc.
Olsson Associates
Orazem & Scalora Engineering, P.A.
Palmerton & Parrish, Inc.
Parsons Brinckerhoff Quade & Douglas, Inc.
Payne & Brockway, P.A.
PEC PA
Poe & Associates, Inc.
Ponzer-Youngquist, P.A.
Poole Fire Protection, Inc.
Reiss & Goodness Engineers
RTE Technologies, Inc.
Ruggles & Bohm, P.A.
Schwab-Eaton, P.A.
Shafer, Kline & Warren, Inc.
Systems Management Consultants, Inc.
Terracon, Inc.
The Wellington Group
TranSystems Corporation
UHL Engineering, Inc.
URS Corporation, Inc.
Walter P. Moore and Associates, Inc.
Wilbur Smith Associates
Wilson & Company

Consulting Kansas

Fall 2007

CODE CHANGES OFFERED TO CALM JITTERY BUILDING OFFICIALS

Proposed 2009 International Building Code changes for risk assessment and structural integrity are supported by the 15 industry organizations involved in their crafting. But sources say the proposals are unnecessary and meant to pacify those building officials clamoring for change after the attacks on the World Trade Center.

“Current codes should really be adequate to address credible hazards, so we really shouldn’t need these proposals at all,” says Jonathan C. Siu, principal engineering building official, Dept. of Planning and Development, Seattle. “I understand the need some people have politically to look like we’re doing something, but I am not one in the International Code Council constituency who sees an urgent need to address this in code language.”

In one proposal, the building official is empowered to accept a risk assessment that identifies potential attack scenarios. The development team is required to mitigate identified risks “to an extent acceptable to the official.” Acceptance of the risk with no unusual design action is an acceptable mitigation. And “once

agreement is reached, records of the assessment and agreements are returned to the owner for disposition as the owner deems appropriate,” says Ronald O. Hamburger, a vice president with Simpson Gumpertz & Heger, San Francisco, and chairman of the National Council of Structural Engineers Association’s ad hoc joint industry committee on structural integrity, which submitted the proposals.

The structural-integrity proposal sets uniform criteria for buildings taller than three stories, with requirements for minimum strength and types of connections.

Chris D. Poland, chairman of Degenkolb Engineers, San Francisco, would prefer code changes that were developed through the American Society of Civil Engineers’ standards process “to assure they represent a broad consensus.”

But Louis Geschwindner, vice president for engineering and research at the American Institute of Steel Construction, Chicago, calls the proposals “a significant improvement over the progressive-collapse and stairwell-integrity proposals they are intended to replace.”

AIA RELEASES NEW A201 DOCUMENTS

The American Institute of Architects (AIA) has released the new updates to the A201™-2007 and nearly 50 other owner/architect, architect/consultant, and contractor/ subcontractor agreements. The

updates were released in November.

Additional information on the new documents can be found on the AIA website at www.aia.org.

ACEC KANSAS SELECTS 2007 CITY AND COUNTY PUBLIC IMPROVEMENT AWARD WINNERS

ACEC Kansas offers awards annually to cities and counties for the best public improvement projects of the year. The Public Improvement Awards (PIA) are awarded based on the benefit a project brings to the community, and are awarded in several different population categories. Competition is always intense. The City PIA awards are presented at the Fall Conference of the Kansas Association of City/County Management, and the County PIA awards are presented at the Kansas Association of Counties Annual Luncheon.

This year, the following County PIA entries were selected as winners:

Clay County for their *Morganville Bridge Replacement Project* (Under 10,000 Population); Engineer: Cook, Flatt & Strobel.

Harvey County for their *Bituminous Mill & Overlay, Roadway Construction and Parking Lot Construction Project* (Over 10,000 Population); Engineer: Poe & Associates.

The following City PIA entries were selected as winners:

City of Solomon for their *Downtown Revitalization Project* (under 5,000 Population); Engineer: Schwab-Eaton, P.A.

City of Pratt for their *Water Main to Ethanol Plant Project* (5000 to 20,000 Population); Engineer: EBH & Associates

City of Leavenworth for their *6th Street Bridge Replacement Project* (20,000 to 50,000 Population) Engineer: Wilson & Company

City of Wichita for their *Arkansas River Corridor Improvement Project* (50,000 and Over Population); Engineers: Law/Kingdon, Inc., Wilson & Company, and HNTB.

Thanks to all those that entered. Please mark your calendars for 2008 and plan to participate by submitting the best projects Kansas cities and counties have to offer!

ACEC of Kansas Firm News

Affinis Corp.

Affinis Corp. was recently named a "Best Civil Engineering Firm to Work For" by CE News, a large, national industry publication. Affinis is the only locally based consulting engineering firm to be awarded the designation – and one of just a few firms with offices in the metro area.

Affinis' scores exceeded the overall benchmarks on many counts. The 35-person civil engineering firm, which has offices in Lee's Summit and Overland Park, is focused on building long-lasting relationships with co-workers, clients and colleagues.

DLR Group

DLR Group has announced the acquisition of two key design firms to the DLR Group organization. The acquisition of Becker Winston in Philadelphia, Pa., and Newman Cavender & Doane in Denver, Colo., initiates the beginning of an acquisition process that has been outlined to further strengthen the company's design experience and client service in local and national markets.

Becker Winston is a leading Philadelphia design firm with historical preservation capabilities. Newman Cavender & Doane of Denver, now DLR Group Newman Cavender, adds design talent to its Corporate and Interiors practice nationally, and was responsible for the design of the Denver Newspaper Agency that houses both Denver Post and Rocky Mountain News.

DLR Group is a full-service design firm with 14 offices nationwide.

HNTB Corporation

Michael Hess, P.E. has been promoted to Director of Transportation in the Overland Park office of HNTB Corporation.

Since joining HNTB in early 1994, Mike has served as Associate Vice President, Department Manager for the Bridge Section, and Project Manager. In this new capacity, he will be responsible for managing and developing staff, implementation of marketing goals and growth initiatives, and monitoring quality within the department.

(Continued on page 3)

(Continued from page 2)

Mike is also a key figure with HNTB's corridor and interchange planning studies along with complex urban interchanges, highway and bridge projects.

Mike graduated from the University of Kansas in 1992 and brings over 16 years of experience in the planning, design and management of projects.

Professional Engineering Consultants, P.A.

PEC, P.A. is pleased to announce the promotion of **Clint D. Fiechtl, P.E.** and **Melanie R. Dickey, P.E.** from Associate to Senior Associate.

Professional Engineering Consultants, P.A. was established in 1965, and has a staff of more than 250 with offices in Wichita, Topeka, Tulsa, Lawrence and Pittsburg. PEC provides a full range of consulting engineering services to clients in Kansas, Oklahoma and Missouri. These services include mechanical, electrical, structural, transportation, water/wastewater, municipal, land development, inspection, geotechnical and survey.

Shafer, Kline & Warren, Inc.

Shafer, Kline & Warren, Inc. (SKW) is preparing to write another chapter in company history. While celebrating their 57th year in business, the surveying, planning and engineering firm is preparing to relocate their corporate office to the Southlake Technology Park in Lenexa. Having outgrown their building in Overland Park, SKW announced plans in January to purchase the office building formerly occupied by Quintiles at 11250 Corporate Avenue.

The move is a reflection of the firm's recent growth, as well as their commitment to the Johnson County community. In each of the past three years SKW has seen substantial increases in revenue, and expects 2007 to again be a record year. That growth has left SKW with the challenge of accommodating additional staff and equipment.

The move will allow SKW to relocate 90 employees to Southlake, with the additional capacity to hold up to 140 staff.

The firm expects to be fully operational in the new building by late July. SKW currently has 250 employees in eight offices located in Kansas City, North Kansas City, Columbia, Macon and Chillicothe, MO; Tulsa, OK; and Iola and soon Lenexa, KS.

Terracon

Kent Dvorak, P.E., of Terracon's Lenexa office, received the Kansas Society of Professional Engineers (KSPE) Engineer of the Year award at the 2007 annual conference held in Topeka, Kan., on

June 21, 2007. Dvorak was eligible after winning the Eastern Chapter Engineer of the Year award in February.

With the KSPE, Dvorak has served on the board of the Eastern Chapter and was its president in 1994. Dvorak also received the Young Engineer of the Year award in 1989 and 1991. He has served as a state director of KSPE and on the state awards committee for three years, two years as chairman.

Eric J. Gorman, C.H.M.M., and Charles W. Valenta of Terracon's Lenexa office, were recently promoted to senior associates with the firm. The senior associate program recognizes consistent superior performance, moral character, work ethic and significant contributions from staff in management positions.

Mr. Gorman is the assistant environmental department manager responsible for business development, management and technical supervision of the due diligence personnel and projects in the Kansas City region. He has been with Terracon for five years and is a registered professional geologist in Kansas and Missouri.

Mr. Valenta is the geotechnical operations manager responsible for Terracon's drill fleet operations throughout Kansas, Missouri and northwest Arkansas. He has been with Terracon for eight years and previously served 22 years of active duty in the U.S. Army Corps of Engineers.

Terracon has expanded and relocated their Lee's Summit location to 1250 SE Century Dr., Lee's Summit MO, 64081. Gary Hanson, C.S.P., C.I.H., will serve as the office manager. He has over 25 years of experience in the industry and was previously the environmental health and safety group manager in the Lenexa, KS office.

Terracon is an employee-owned consulting engineering firm providing geotechnical, environmental, construction materials and facilities services from more than 95 offices nationwide with over 3,000 employees. For additional information about Terracon, please visit them at www.terracon.com.

URS Corporation

URS Corporation and Washington Group International, Inc. jointly announced that they have agreed to join forces to create a single, top-tier engineering and construction services company. The combination will bring together two organizations with the goal of creating a new leader in the industry. URS' Overland Park office employs over 150 engineering professionals providing a wide range of engineering and engineering-related services.



AMERICAN COUNCIL OF ENGINEERING COMPANIES
of Kansas

825 S. Kansas Avenue
Suite 500
Topeka, Kansas 66612

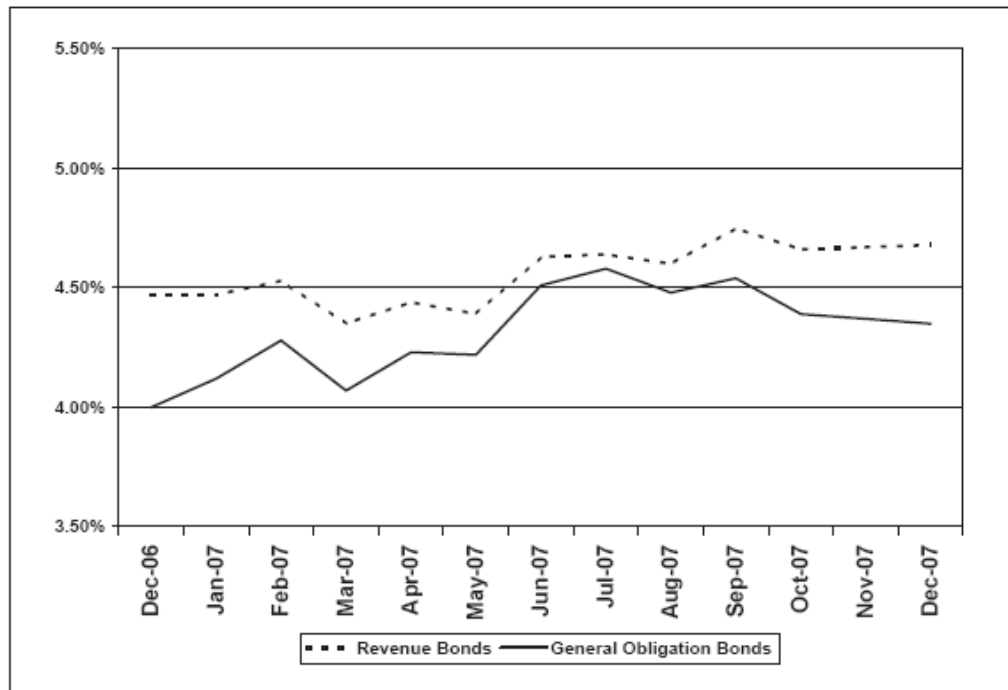
Phone: 785/357-1824
Fax: 785/233-2206
sheidner@acecks.org
www.acecks.org

PRSR STD
US POSTAGE
PAID
PERMIT #
Topeka, Kansas

Visit us on the web at:
www.acecks.org

Consulting Kansas is published quarterly for ACEC of Kansas by Gaches, Braden, Barbee & Associates
Scott Heidner, ACEC of Kansas Executive Director ♦ Phone 785/357-1824 ♦ Email: sheidner@acecks.org

Kansas 12-Month Tax-Exempt Interest Rate Trends



The chart above was prepared by George K. Baum & Company, Investment Bankers, Kansas City, MO, member FINRA (www.finra.org). The chart shows interest rates and trends based on average national municipal bond yields, as compiled and published weekly in The Bond Buyer, adjusted to reflect the historical difference between national averages and Kansas bonds. George K. Baum & Company believes that the chart above is accurate and representative of Kansas bond performance in the time frame shown, but it makes no warranties as to accuracy or completeness. Past interest rates or trends are not necessarily indicative of future interest rates or trends. For more information, please contact George K. Baum's Public Finance Department at 800-821-7195.